

PART OF THE WEST 1/2 OF SECTION 14, T.5N., R.1W., S.L.B. & M.  
**THE RIDGE AT REGENCY HEIGHTS**  
**AMENDED LOTS 1 & 2**

TAXING UNIT: 25

IN OGDEN CITY  
SCALE 1" = 50'

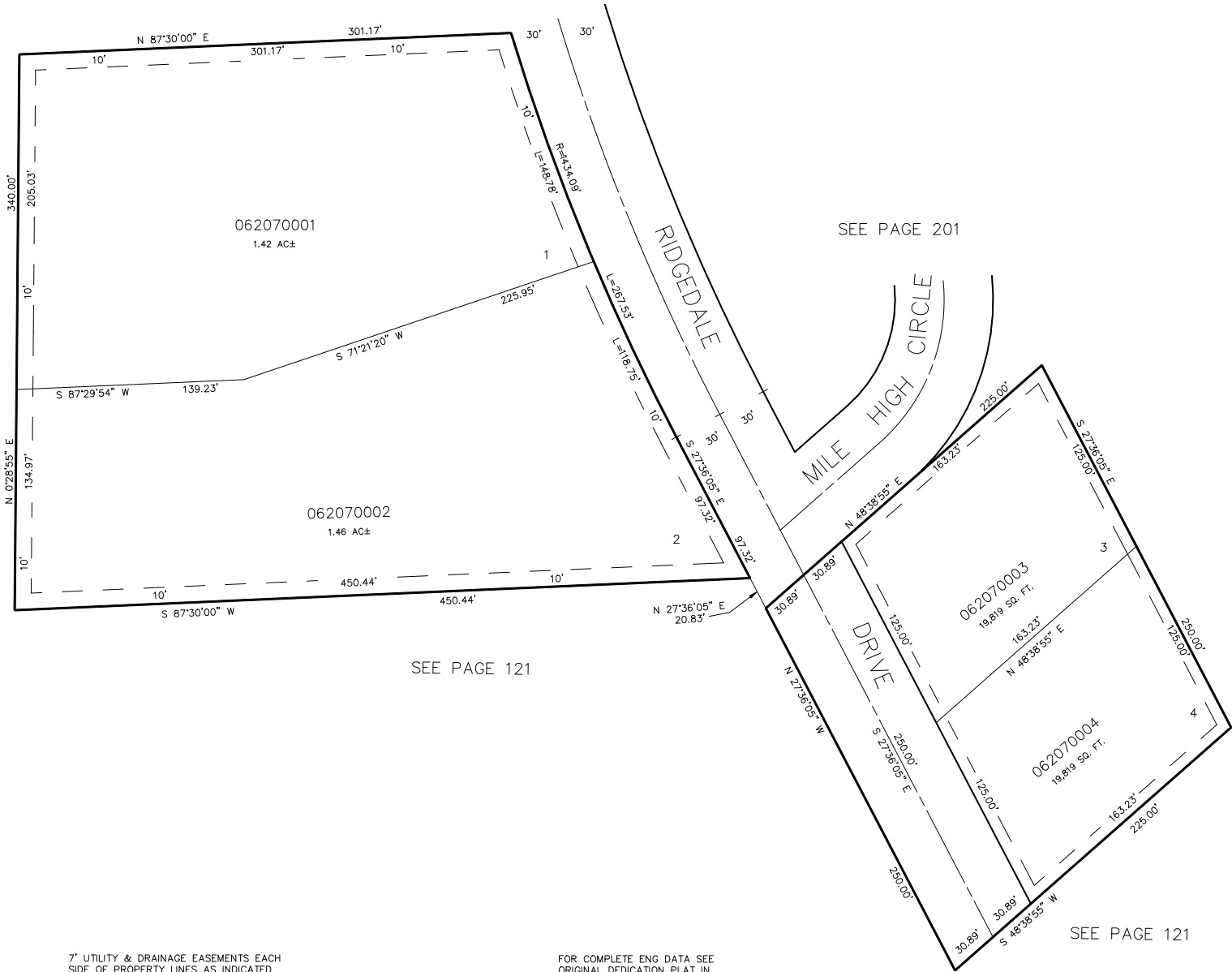
SEE PAGE 204

SEE PAGE 201

SEE PAGE 121

SEE PAGE 121

SEE PAGE 121



7' UTILITY & DRAINAGE EASEMENTS EACH  
SIDE OF PROPERTY LINES AS INDICATED  
BY DASHED LINES EXCEPT AS OTHERWISE  
SHOWN.

FOR COMPLETE ENG DATA SEE  
ORIGINAL DEDICATION PLAT IN  
BOOK 32, PAGE 50 OF RECORDS.  
FOR AMENDED DEDICATION PLAT SEE  
BOOK 33, PAGE 75 OF RECORDS.